

Total IgE Test

(Allergy indicator test)

General Information

Purpose: Detection of Total IgE

Principle: Immunochromatographic assay

Specimen: Plasma or serum

Materials provided:

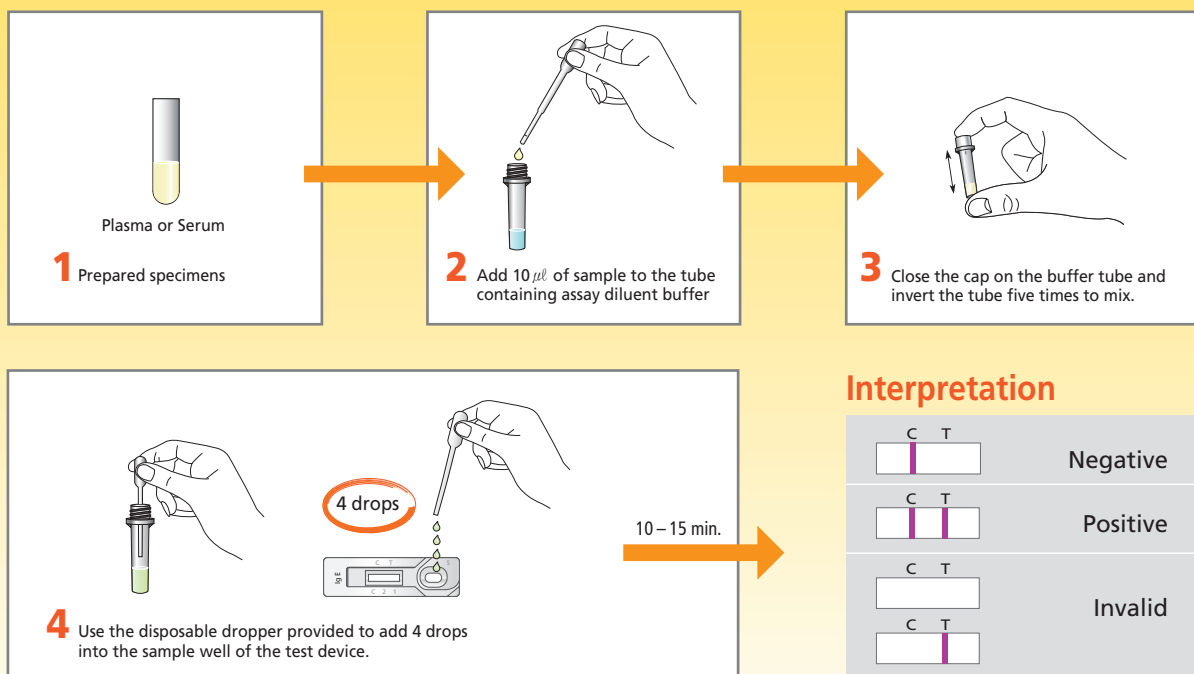
- Anigen Rapid Total IgE test device
- Assay diluent buffer
- Disposable capillary tube
- Disposable dropper

Special Features:

- One-step testing procedure – quick and accurate
- High sensitivity and specificity
- Canine allergy indicator test



Test Procedure



Interpretation

C	T	Negative
—	—	
C	T	Positive
—	—	
C	T	Invalid
—	—	
C	T	Invalid
—	—	



Canine



Serum



10 min.



Accuracy: 98%
Cut off: 10 µg/ml

New screening method for Canine Atopic Dermatitis

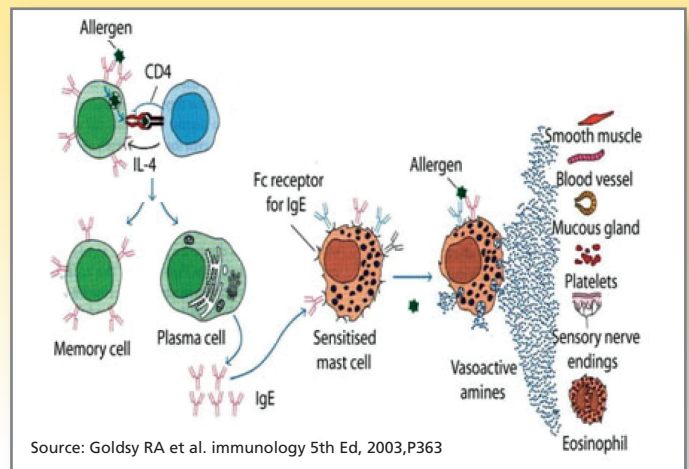
Canine atopic dermatitis (CAD) is a genetically predisposed inflammatory and pruritic allergic skin disease, with characteristic clinical features associated with IgE antibodies most commonly directed against environmental allergens.

After ruling out other causes (e.g. flea bite, scabies) of hypersensitivity, atopic dermatitis is generally diagnosed by major or minor criteria in the local clinic.

Anigen Rapid Total IgE Test Kit detects canine total IgE in canine serum. It provides simple and quick test results in-clinic which can be shown to the owner and supports a criteria based diagnosis.

Because of the Threshold phenomenon and Summation effects, specific IgE tests cannot be used to identify the cause of atopic dermatitis

in true atopic dermatitis cases. Total IgE Test detects summation of all IgE to each allergen, which is suitable for an initial screening method of canine atopic dermatitis.



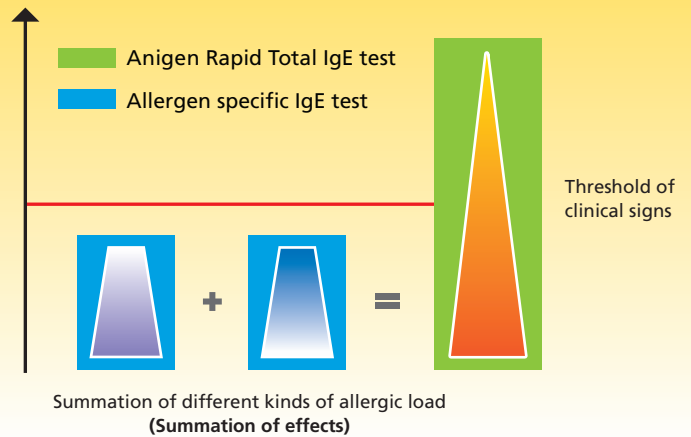
Difference between total IgE and allergen specific IgE

Anigen Rapid Total IgE test

- ✓ Measures summation effect of allergic load
- ✓ IgE measurement against all allergens
- ✓ **Suitable for 1st action to support CAD diagnosis**
- ✓ **Easy and rapid test procedure available in-clinic**

Allergen specific IgE test

- ✓ IgE titration against each specific antigen
- ✓ Summation effect is not considered
- ✓ Suitable for finding out the cause of CAD in a laboratory



Ordering information

Catalogue No.	Description	Type	Packing size
RB21-10	Total IgE	Device	10 Tests/Kits



Imported by Life Bioscience
Technical support: 03 9568 4140
info@lifebioscience.com.au



Distributed by Pharmachem
Phone: 07 3868 0333
info@pharmachem.com.au

CANINE